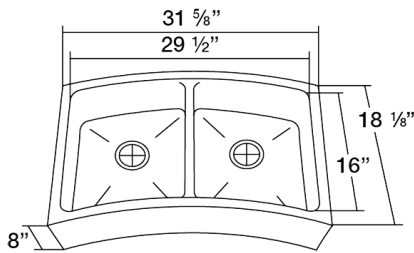


## Curved Double Bowl Apron Stainless Steel Kitchen Sink

Stainless Steel Sinks are the most popular choice for today's kitchen. Stainless steel has long been used in kitchen environments for its clean look and durability. Our sinks are made from 304 grade stainless steel that contains 18% chromium and 8-10% nickel and are guaranteed not to rust.

This makes the steel "stainless" and is the highest quality steel used in kitchen sinks. The brushed finish of our sinks is preferred over our competitors for its ability to hide small scratches than can occur over time. We warranty all sinks to last the lifetime of your home.

### Dimensions



### Accessories



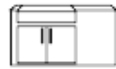
# S404

31 5/8" x 18 1/8" x 8"



### Features

#### Apron Installation



#### 16 Gauge



#### Cold Rolled Stainless Steel



#### Brushed Satin Finish



#### Offset Drain 3 1/2"



#### Sound Dampening



#### Fully Insulated



#### Limited Lifetime Warranty



### Tech Specs

- Farmhouse-Style/Apron Sink Installation
- 16-Gauge Steel
- Certified High-Quality 304 Stainless Steel
- Brushed Satin Finish
- Offset Drain
- Thick Sound Dampener Rubber Pad
- Fully Insulated
- Lifetime Warranty